

# The Center for Early Childhood Development, Education, and Policy Research (CEDEP)

Graduate School of Education  
The University of Tokyo



# Message from Dean of Graduate School of Education

The Center for Early Childhood Development, Education, and Policy Research (CEDEP) published a book in March, 2016, titled *All Discipline Leads to ECEC: Challenge from Early Childhood Development, Education, and Policy Research*. This title represents the vision of our center.

Interdisciplinary, collaborative, and comprehensive research is essential in the quest to reveal the mechanisms of children's early development and to improve the environment and experience in which all children grow. At the same time, we need to collaborate with practitioners who devote themselves to early childhood education and care, policy, and administration.

Since a year before the establishment of CEDEP in July 2015, we have been inviting scholars and experts from various fields, both directly and indirectly related to early childhood development, education, and policy, for seminars and symposia. In addition, we have conducted a wide range of research projects, including a nationwide survey for ECEC practitioners and municipalities, introduced in this booklet. A new publication about these surveys will be launched very soon.

We thank you and appreciate your ongoing support and cooperation.

July 2017



Shigeo Kodama, Ph.D.

Dean, Graduate School of Education  
The University of Tokyo



# Message from Director

The Center for Early Childhood Development, Education, and Policy Research (CEDEP) was founded to establish a new interdisciplinary research field, “Comprehensive research for early childhood education and care (ECEC) practice and policy,” which combines research on early childhood development, ECEC practice and public policies. Early childhood research is a wide-ranging field with various topics to be discussed. To make an effective breakthrough in ECEC practice and policy, CEDEP will collaborate with domestic and international research organizations, parents, caregivers, educators, and teachers, local and national governments, and relative institutions. Based on this collaboration, CEDEP will publish research findings that will, hopefully, lead to innovation and improvements of quality in early childhood environments.

Japan is among the first countries confronting the problems that stem from declining birthrates and an aging society. To cope with such situations, the biggest and most historic ECEC policy reform in the last 70 years in Japan has been introduced. The new system, “The Comprehensive Support System for Children and Child-rearing,” started in April 2015. Interdisciplinary researches are now needed for our children. CEDEP and its related research organizations will implement research in four main areas, including early childhood developmental science, childhood education and care, educational policy, and professional development. We will elucidate human beings’ earliest development mechanisms, elicit an innovative early childhood environments for now-and-future children, construct programs and social systems for professional development, and design ECEC policies. Based on both Japanese history and philosophy, coupled with the latest international trends, we will construct evidence-based knowledge and philosophies for early childhood education and care and childrearing. We will share the newest research findings with people working in the early childhood education and care field, and hope to support the communities as it work to realize every child’s well-being and development. This is what we call “comprehensive research for ECEC practice and policy.”

“All disciplines lead to ECEC.”

Making the most of knowledge diversity at the University of Tokyo, we hope this center will become a crossroad of knowledge and ideas where we all, including children, can gather and discuss about ECEC and its future.

July 2015



Kiyomi Akita, Ph.D.

Director, CEDEP



# About CEDEP

- Established in July 2015
- The first national academic organization to study early childhood education and care (ECEC) beginning from children’s birth



# Our missions

Care and Education	Developmental Science
<ul style="list-style-type: none"> <li>• Studying the relationship among the quality of child rearing at home, the quality of ECEC and child development</li> </ul>	<ul style="list-style-type: none"> <li>• Conducting scientific researches on human development (especially infant behavioral and brain development)</li> </ul>
Public Policy	Professional Development
<ul style="list-style-type: none"> <li>• Conducting social scientific researches on ECEC policies</li> <li>• Presenting practical knowledges contributing to policy formation and implementation</li> </ul>	<ul style="list-style-type: none"> <li>• Fostering human resources that promote the quality improvement of child rearing and ECEC on the basis of scientific evidence</li> </ul>



# Why CEDEP?

- The significance of the quality of early childhood environment and children’s experiences during early years are widely noticed.
- In Japan, there were no single national research organizations focusing specifically on ECEC (early childhood care and education) until CEDEP was established.
- Empirical researches on early childhood environment quality and child development in Japanese contexts are urgently needed to generate evidence basis for ECEC policy and practice.



# Research Projects

## ◆ Nation-wide ECEC staff survey (2015)

-focusing on the actual conditions of Japanese ECEC (early childhood education and care) provisions.

## ◆ Local government ECEC policy administration survey (2015)

-focusing on the actual conditions of ECEC policy administration by local government.



## ◆ Early childhood panel study (pilot study in 2017)

-focusing on the relationship among the quality of child rearing at home, the quality of ECEC and child development.

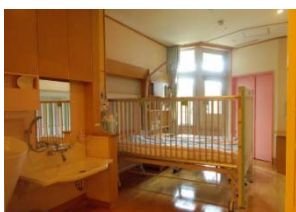
## ◆ Research on ECEC advisor system (2016-2017)

-focusing on the pilot project of ECEC advisor system introduced to selected local governments.

## ◆ Study on outdoor environment in Japanese ECEC settings (2016-2017)



## ◆ Study on ECEC staff in hospital wards (2016-2017)



## ◆ SEEDS Project (2015-)

-Research grant project for young researchers in ECEC and relative research field





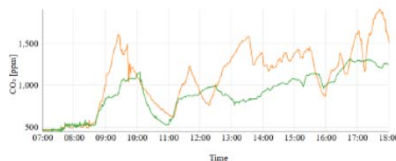
# Research Projects

## ◆ Nation-wide ECEC staff survey (2017-)

-focusing on mealtime and nap time at ECEC settings, how ECEC staff interact with children, what kinds of value they believe, and other facts.

## ◆ Smart ECEC (2017-)

-developing a sensing system for monitoring various environmental properties in ECEC settings such as temperature, humidity, CO2 concentration, and movement of teachers and children. The sensing data will be analyzed using the newest AI technology to examine high quality environmental condition for children.



## ◆ CEDEP food log app (2017-)

-developing an app to record children's daily meal images, analyze the food balance, and visualize his/her food log. Information about children's health, sleep time, sleep quality, excrement as well as parent's sleep time, sleep quality, interaction with their child during mealtime can be recorded to think about the child's total health. This app will be applied to foster virtual network among parents in Japan.



## ◆ Executive function app (pilot study in 2017)

-interpreted some executive function apps developed at the Wollongong University in Australia, to assess children's working memory, inhibition, and shifting. These apps will be used for the upcoming longitudinal study implemented by CEDEP from 2017.

## ◆ ECEC process quality scale (2017-)

-referring to foreign ECEC quality rating scales, e.g. ECERS-R/ ITERS-R, CLASS, SICS, SSTEW etc., CEDEP is now developing a culture sensitive scale for assessing ECEC process quality, i.e. teacher-child interaction and classroom environment. This project is conducted through collaboration with ECEC practitioners in Japan.





# CEDEP Staff

- **Director** Kiyomi Akita  
Division of Professional Development of Teachers, Graduate School of Education
- **Vice director** Toshihiko Endo  
Division of Educational Psychology, Graduate School of Education
- **Research members**

Care and Education	Affiliated post	Field of specialty
Sachiko Nozawa	CEDEP	ECEC, Child Psychology
Yumi Yodogawa	CEDEP	ECEC, Child Psychology
Midori Takahashi	CEDEP	Developmental Psychology
Developmental Science		
Gentaro Taga	Division of Physical and Health Education	Developmental Brain Science
Hama Watanabe	Division of Physical and Health Education	Developmental Brain Science
Yuta Shinya	CEDEP	Developmental Psychology
Public Policy		
Yusuke Murakami	Division of School Improvement and Policy Studies	Educational Administration
Tomohiro Seki	CEDEP	Political Science

- **Administrative staff** Miho Saito CEDEP



# CEDEP Publications



**All Disciplines Lead to Early Childhood Education and Care: Challenge from Early Childhood Development, Education, and Policy Research.**

K. Akita (eds.) A. Yamabe, G. Taga (associate eds.) University of Tokyo Press; Tokyo, 2016.



**[Translation] Assessing Quality in Early Childhood Education and Care: Sustained Shared Thinking and Emotional Well-being (SSTEWS) Scale for 2-5 Year-olds Provision.**

I. Siraj, D. Kingston & E. Melhuish K. Akita & Y. Yodogawa (translation) Akashi Shoten co.Ltd., 2016.



**[Translation] Effective and Caring Leadership in the Early Years.**

I. Siraj & E.Hallet K. Akita (translation eds.) M. Suzuki, Y. Yodogawa & S. Sagawa (translation) Akashi Shoten co.Ltd., 2017.



website: <http://www.CEDEP.p.u-tokyo.ac.jp/en/>